

Application

Nexans Device Manager NEXMAN provides an easy and comfortable solution for configuration, management and supervision of Nexans Ethernet switches. Both, FTTO switches (e.g. GigaSwitch V3/V5) and switches for harsh environment (e.g. iGigaSwitch 10XX/16XX), product families are suitable to be managed via Nexans device manager.

Stand-Alone and Controller Version

NEXMAN Stand-Alone Version is a desktop application for single or multiple users. NEXMAN Controller is a client-server software architecture that allows simultaneous access from different clients. The fat-client installation provides a comfortable way to manage the database without active connection to the network.

Zero-Touch Configuration

Nexans LANactive Zero-Touch Configuration is a contemporary way of designing, building and operating networks with minimum effort. The use of LANactive GigaSwitches together with the NEXMAN Controller configuration and management software ensures networks are flexible and scalable.

After connecting a Nexans LANactive GigaSwitch to a network segment, the switch will automatically link to its controller to receive provisioned firmware and configuration.

Master Configuration

Based on the master configuration function, one or more switches of a device list can be configured at once. With the master configuration the administrator can select which parameter shall be configured e.g. SNMP, user/admin access or VLANs. Furthermore, a master configuration can be saved for each department, in case they require different settings.

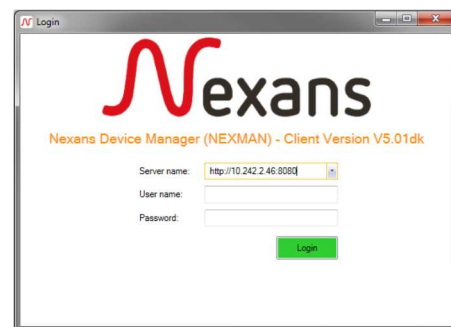
Scheduled Firmware Update

Using the time scheduled firmware update function, chosen switches can be provided with a new firmware by NEXMAN.

Free of charge Test evaluation

Nexans device manager NEXMAN can be downloaded free of charge for evaluation purposes. Compared to the license-based version, the following restrictions apply:

- Delayed starting screen for registration key request
- Maximum five switches can be saved in a device list



LANactive
Switch to the future

NEXMAN 
Client/Server Licence

Features

- Fast Layer-2 and Layer-3 Auto Discovery feature for finding active switches
- Extended device list with individual sorting parameters e.g. IP address, MAC addresses, device name or software version
- Freely definable categories in tree structure
- Highlighting of switch and category by incoming alarms
- Online remote diagnostic and monitoring information of SFP-modules
- Time scheduled firmware update for selected switches
- Master configuration may specify different parameters for distribution
- Creation of multiple master configurations for distribution to one or more switches
- Storage of device configurations in local or remote database
- Storage of old device configurations via history function in the database
- Comprehensive information in system log

Additional Controller Features

- Zero-Touch Configuration
- Centralized collecting of Switch status information
- Switch information renew interval for all registered clients
- Sophisticated user Management with different access levels, roles and user specified device lists
- Detailed assignment of user rights up to the port level
- Client authentication and authorization at NEXMAN Controller (admin or user rights)
- Switch-Lists with multiple user access
- SQL Database for Switch-Lists and Users
- Extended import and export function

Nexans Device Manager (NEXMAN) documentation can be loaded via help menu as a PDF file or Nexans ANS Support Portal. The following documentation and files are available:

- Manual of Nexans Device Manager (NEXMAN)
- Detailed description of all switch functions and configuration parameter
- Manual of Nexans Local Configurator
- Release Notes for Manager, Basic Configurator and Firmware
- Firmware Images
- SNMP MIBs

Please visit our support portal at:
www.nexans-ans.de/support

Article number	Description
88301908	NEXMAN Device Manager (Single License)
88301909	NEXMAN Device Manager (Company License)
88301920	NEXMAN Device Manager (Client-Controller License)

Nexans Device Manager - NEXMAN

Contact
 Advanced Networking Solutions
 Phone: +49 (0) 2166 27 2220
 sales.ans@nexans.com

Screenshots

The screenshots illustrate the NEXMAN interface for device management. The main 'Device-List' window provides a comprehensive overview of the network infrastructure, categorized by building and floor. Detailed configuration windows allow for granular control over device settings, including link states and management parameters. The 'User Management' section ensures secure access to the system through a user database.

